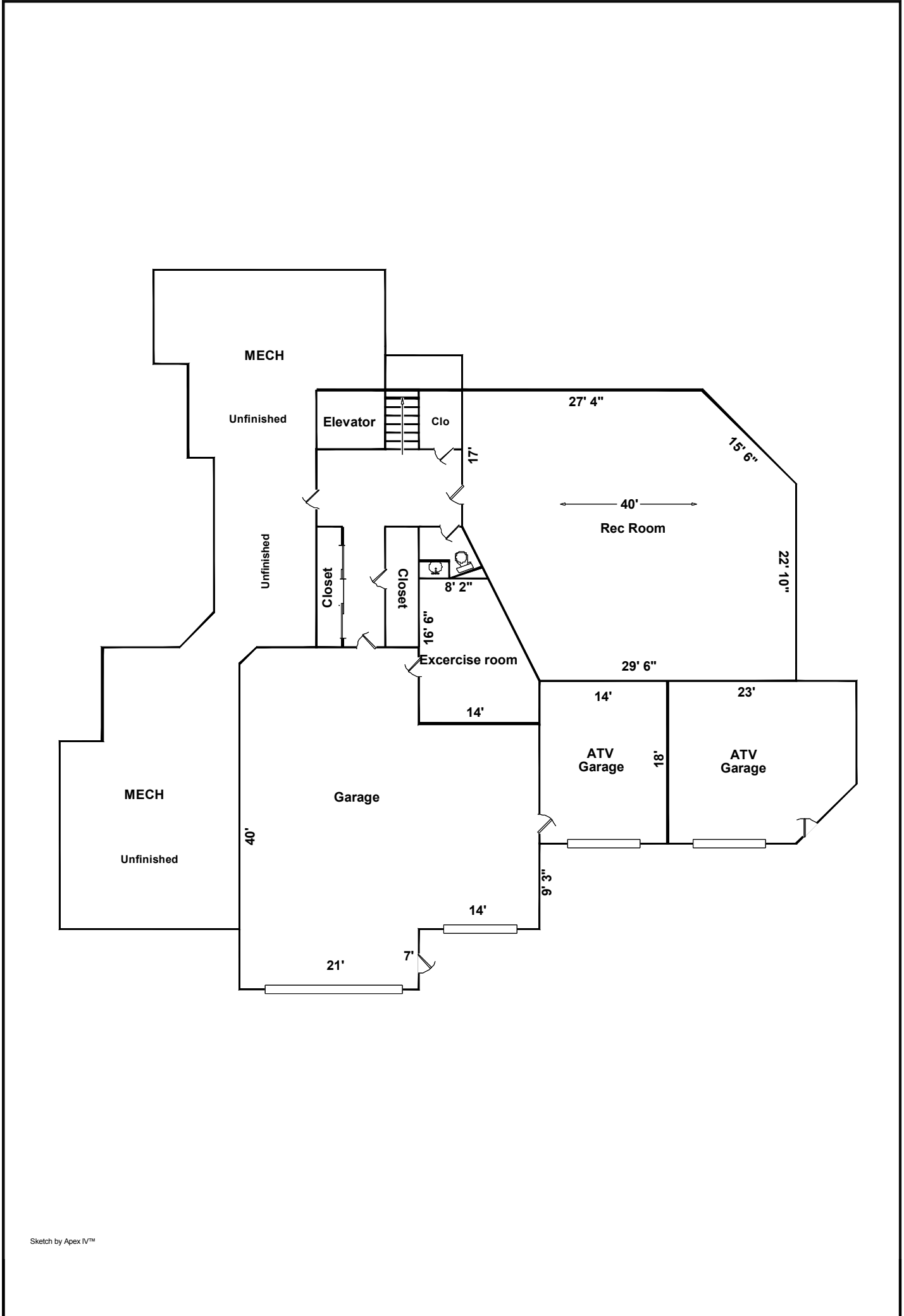


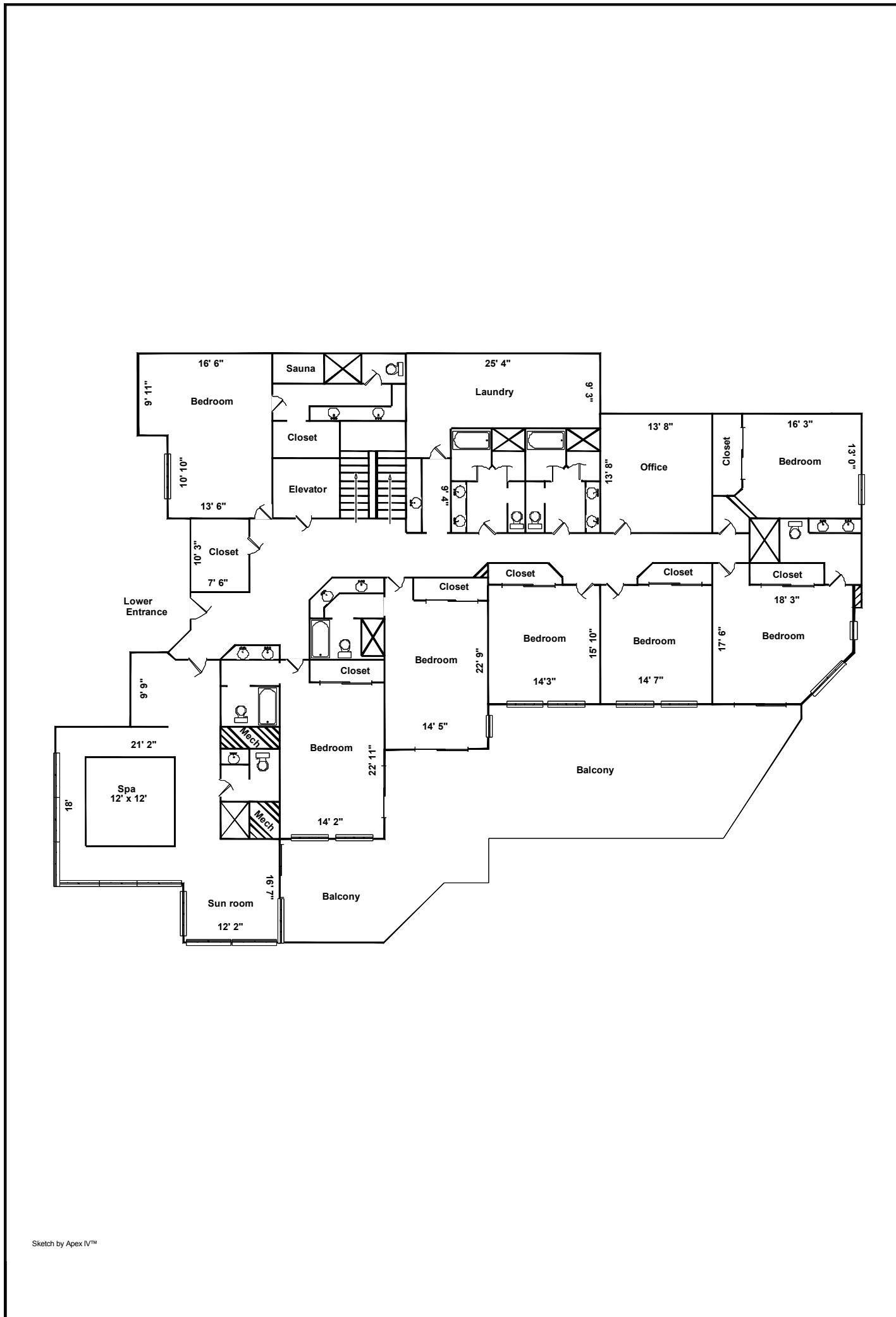
### Building Sketch

Borrower				
Property Address				
City	County	State	Zip Code	
Lender	HomeSight			



### Building Sketch

Borrower			
Property Address			
City	County	State	Zip Code
Lender	HomeSight		



Sketch by Apex IV™

## Building Sketch

Borrower			
Property Address			
City	County	State	Zip Code
Lender	HomeSight		

AREA CALCULATIONS SUMMARY			
Code	Description	Net Size	Net Totals
BSMT	Basement/ Unfinished	1454.0	
	Basement/ Finished	1845.5	3299.5
GAR	Garage	1852.5	1852.5
GLA1	Lower level	5213.4	5213.4
P/P	Balcony	1152.0	1152.0
Net LIVABLE Area		(Rounded)	5213

LIVING AREA BREAKDOWN			
Breakdown			Subtotals
<b>Lower level</b>			
0.5 x	3.0 x	3.0	4.5
	22.0 x	58.0	1276.0
	14.0 x	35.0	490.0
	12.0 x	90.0	1080.0
	6.0 x	89.0	534.0
0.5 x	0.0 x	0.0	0.3
	13.0 x	14.0	182.0
	12.0 x	27.0	323.8
0.5 x	0.0 x	0.0	0.3
	17.0 x	18.0	306.0
	3.0 x	58.0	174.0
	7.0 x	78.0	546.0
	7.0 x	12.0	84.0
	3.0 x	48.0	144.0
0.5 x	7.0 x	7.0	24.5
	4.0 x	11.0	44.0
16 Items			(Rounded) 5213

Basement/ Unfinished		BSMT	
	2.0 x	9.0 =	18.0
0.5 x	2.0 x	2.0 =	2.0
0.5 x	3.5 x	3.5 =	6.3
	2.8 x	3.5 =	10.0
0.5 x	4.0 x	4.0 =	8.0
0.5 x	0.7 x	0.7 =	0.3
	0.7 x	5.7 =	4.0
	4.0 x	7.0 =	28.0
	9.0 x	27.0 =	243.0
	2.0 x	27.0 =	54.0
	10.0 x	23.0 =	230.0
	12.0 x	19.0 =	228.0
	1.0 x	3.0 =	3.0
3 unlisted calculations =			619.5
Area total (Rounded) =			1454

Basement/ Finished		BSMT	
	8.0 x	23.0 =	184.0
0.5 x	11.0 x	11.0 =	60.5
	11.0 x	23.0 =	253.0
	14.0 x	39.0 =	546.0
	19.0 x	34.0 =	646.0
	4.0 x	30.0 =	120.0
	4.0 x	9.0 =	36.0
Area total (Rounded) =			1846

Garage		GAR	
0.5 x	2.0 x	2.0 =	2.0
	2.0 x	7.0 =	14.0
	9.0 x	31.0 =	279.0
	12.0 x	33.0 =	396.0
	7.0 x	21.0 =	147.0
	14.0 x	24.0 =	336.0
0.5 x	7.0 x	7.0 =	24.5
	7.0 x	30.0 =	210.0
	12.0 x	37.0 =	444.0
Area total (Rounded) =			1853

Lower level		GLA1	
0.5 x	3.0 x	3.0 =	4.5
	22.0 x	58.0 =	1276.0
	14.0 x	35.0 =	490.0
	12.0 x	90.0 =	1080.0
	6.0 x	89.0 =	534.0
0.5 x	0.0 x	0.0 =	0.3
	13.0 x	14.0 =	182.0
	12.0 x	27.0 =	323.8
0.5 x	0.0 x	0.0 =	0.3
	17.0 x	18.0 =	306.0
	3.0 x	58.0 =	174.0
	7.0 x	78.0 =	546.0
	7.0 x	12.0 =	84.0
3 unlisted calculations =			212.5
Area total (Rounded) =			5213

Balcony		P/P	
0.5 x	16.0 x	10.5 =	84.0
	2.0 x	10.5 =	21.0
	18.0 x	31.5 =	567.0
0.5 x	8.0 x	8.0 =	32.0
	14.0 x	18.0 =	252.0
	14.0 x	14.0 =	196.0
Area total (Rounded) =			1152