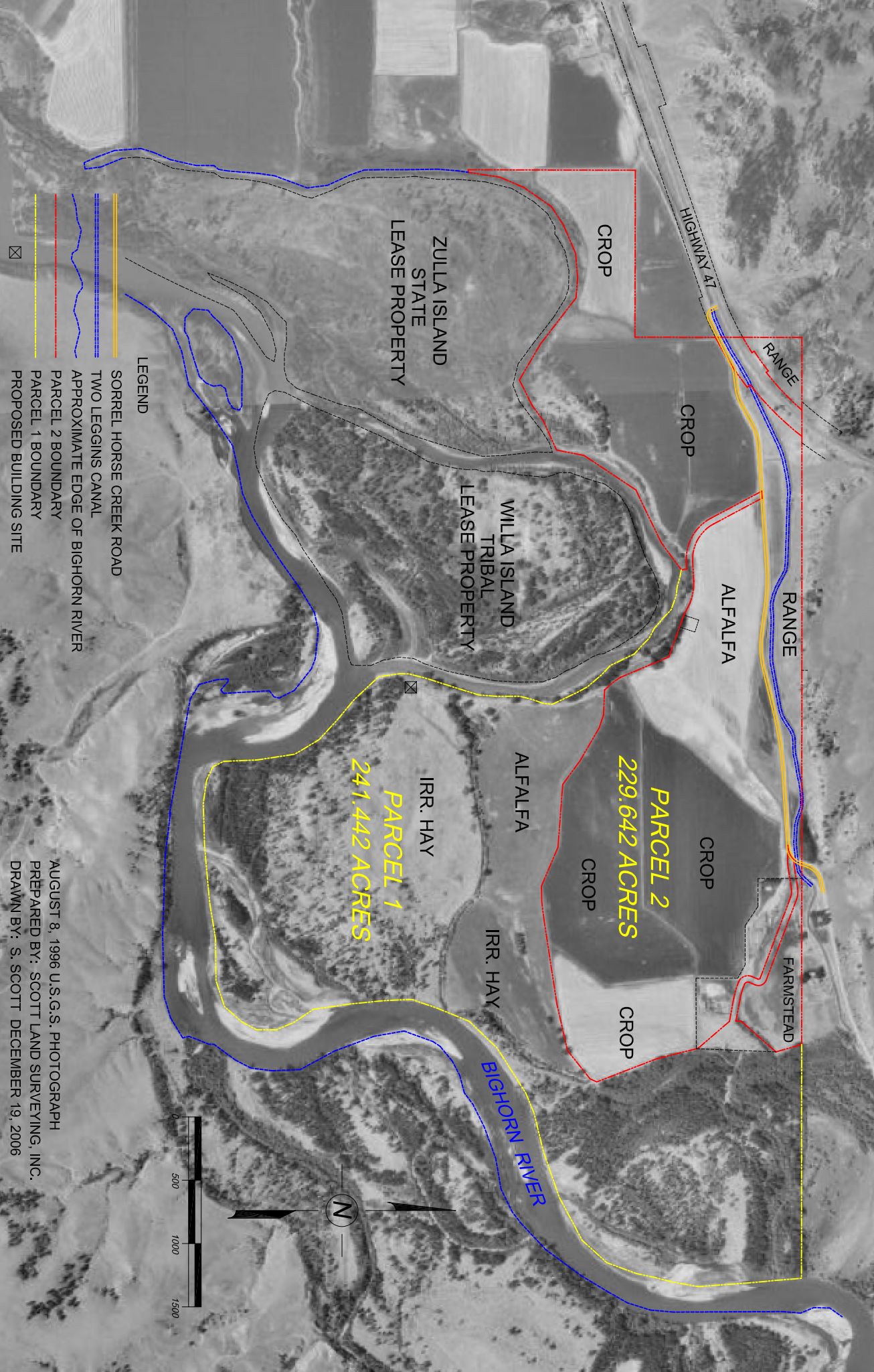


NATURE'S RETREAT

BIGHORN COUNTY, MONTANA



- LEGEND**
- SORREL HORSE CREEK ROAD
 - TWO LEGGINS CANAL
 - APPROXIMATE EDGE OF BIGHORN RIVER
 - PARCEL 2 BOUNDARY
 - PARCEL 1 BOUNDARY
 - PROPOSED BUILDING SITE

AUGUST 8, 1996 U.S.G.S. PHOTOGRAPH
PREPARED BY: SCOTT LAND SURVEYING, INC.
DRAWN BY: S. SCOTT DECEMBER 19, 2006

