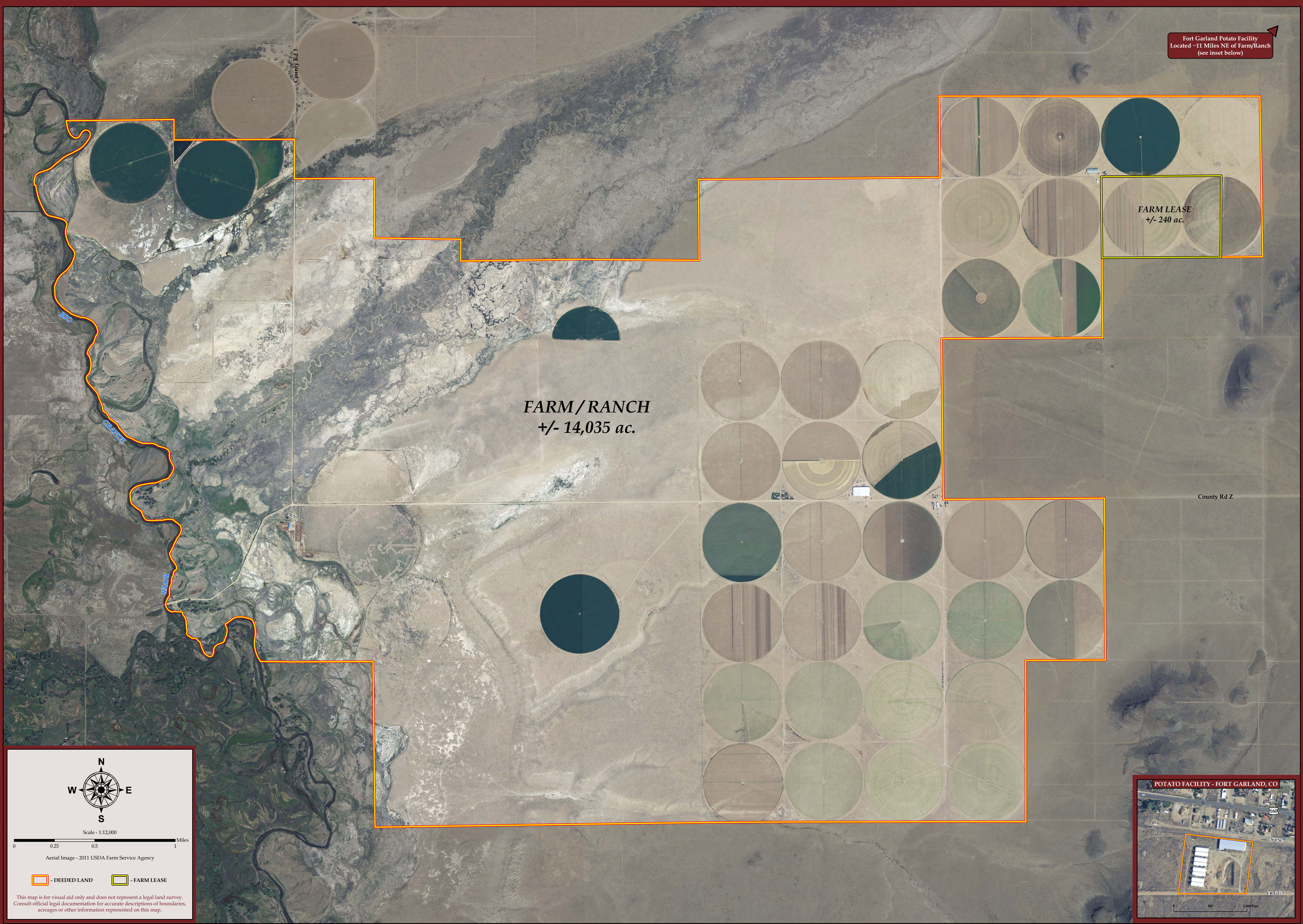
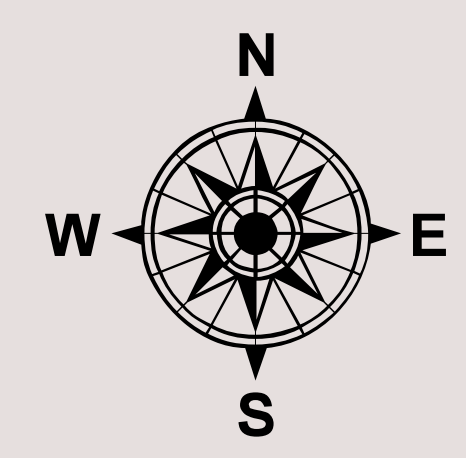


Fort Garland Potato Facility
Located ~11 Miles NE of Farm/Ranch
(see inset below)



FARM/RANCH
+/- 14,035 ac.

FARM LEASE
+/- 240 ac.



Scale - 1:12,000

0 0.25 0.5 1 Miles

Aerial Image - 2011 USDA Farm Service Agency

- DEEDED LAND - FARM LEASE

This map is for visual aid only and does not represent a legal land survey. Consult official legal documentation for accurate descriptions of boundaries, acreages or other information represented on this map.



Mason & Morse Ranch Company is a licensed real estate brokerage firm specializing in the sale of farms, ranches and land throughout Kansas, Nebraska, South Dakota, Wyoming, Colorado, New Mexico, Oregon

Map Date: 2-15-2012 • YampaGeo • 970.701.3008 • www.yampageo.com

COSTILLA IRRIGATED FARM and RANCH

San Luis Valley, Colorado

• Map Is For Visual Aid Only Refer to Legal Descriptions •

MASON & MORSE
RANCHES, FARM & LAND

• www.ranchland.com 1-877-207-9700 •