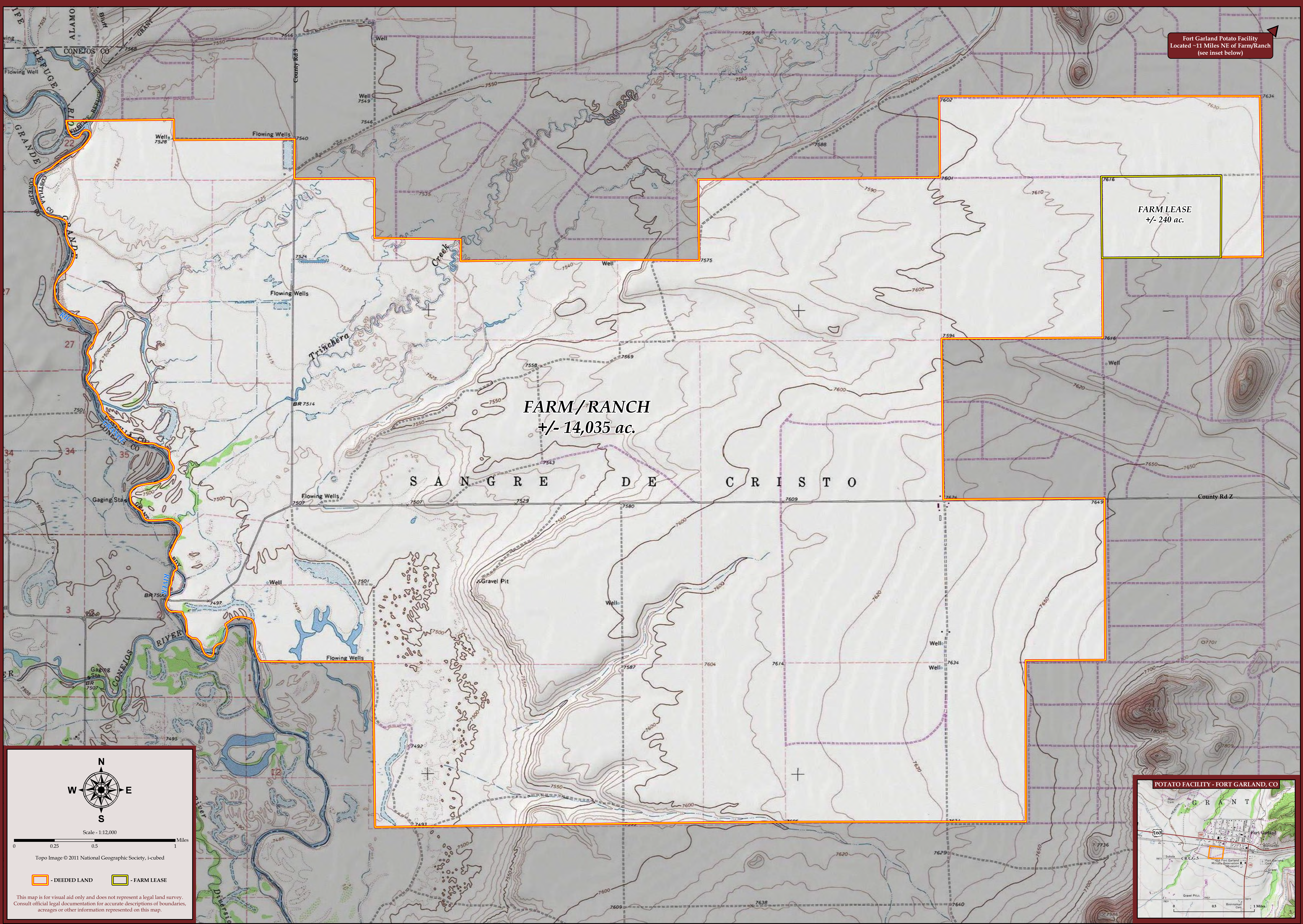


Fort Garland Potato Facility  
Located ~11 Miles NE of Farm/Ranch  
(see inset below)



FARM/RANCH  
+/- 14,035 ac.

FARM LEASE  
+/- 240 ac.

SANGRE DE CRISTO

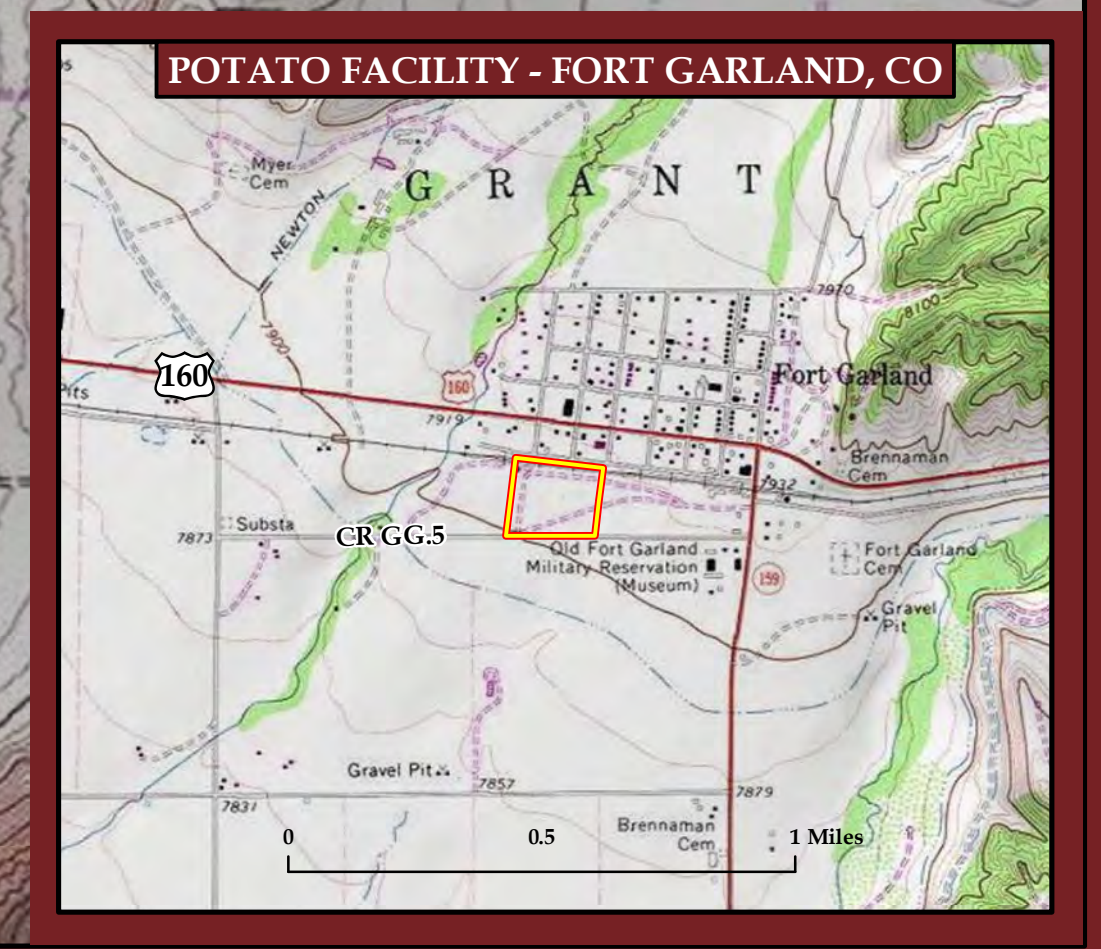
N  
W E  
S

Scale - 1:12,000  
0 0.25 0.5 1 Miles

Topo Image © 2011 National Geographic Society, i-cubed

DEEDED LAND FARM LEASE

This map is for visual aid only and does not represent a legal land survey.  
Consult official legal documentation for accurate descriptions of boundaries,  
acreages or other information represented on this map.



Mason & Morse Ranch Company is a licensed real estate brokerage firm specializing in the sale of farms, ranches and land throughout Kansas, Nebraska, South Dakota, Wyoming, Colorado, New Mexico, Oregon

Map Date: 2-15-2012 • YampaGeo • 970.701.3008 • www.yampageo.com

# COSTILLA IRRIGATED FARM and RANCH

San Luis Valley, Colorado

Map Is For Visual Aid Only Refer to Legal Descriptions

## MASON & MORSE

RANCHES, FARM & LAND

www.ranchland.com 1-877-207-9700