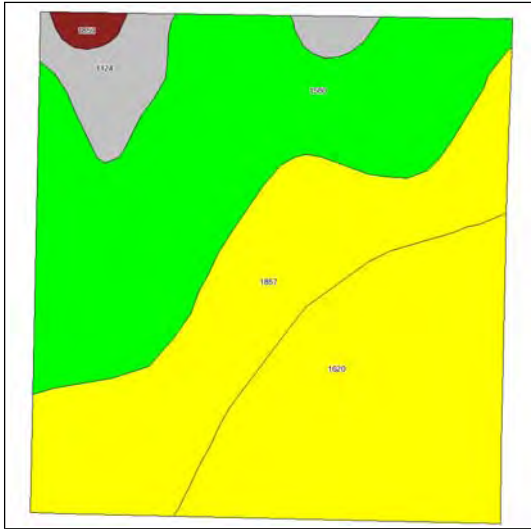


Soils Map








State: **Kansas**
 County: **Sherman**
 Location: **007-009S-037W**
 Township: **Union**
 Acres: **147.8**
 Date: **12/19/2011**



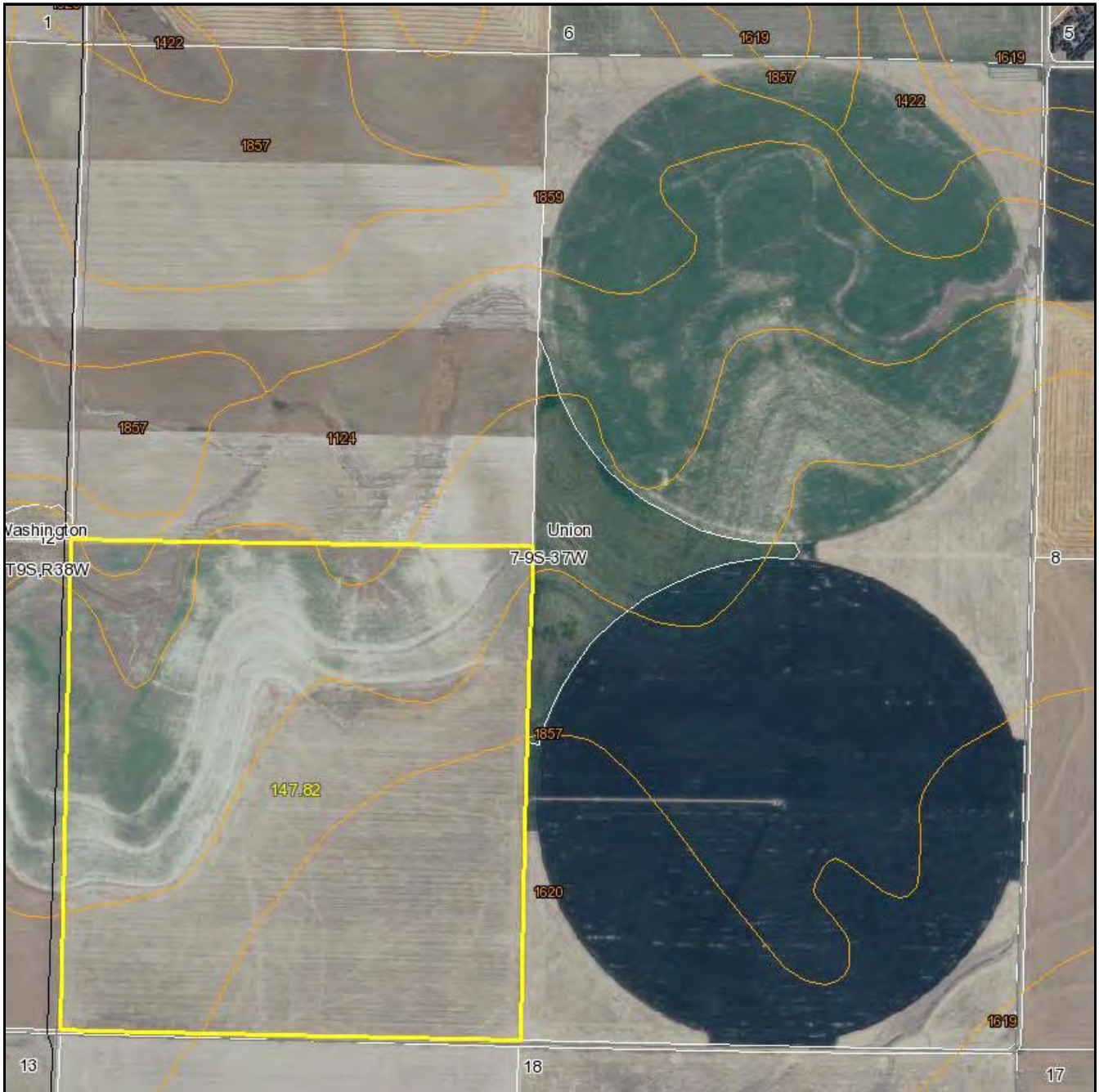
Maps provided by:

 ©AgriData, Inc 2008
 www.AgriDataInc.com

Fsa borders provided by the Farm Service Agency as of May 23, 2008.
 Soils data provided by USDA and NRCS.

Code	Soil Description	Acres	Percent of field	Non-Irr Class Legend	Non-Irr Class	Irr Class	Smooth brome grass	Alfalfa hay Irrigated	Corn	Corn Irrigated	Sunflowers	Sunflowers Irrigated	Grain sorghum	Grain sorghum Irrigated	Winter wheat	Winter wheat Irrigated	Corn silage Irrigated
1580	Colby silt loam, 5 to 15 percent slopes	55.1	37.3%		Vle										20		
1620	Keith silt loam, 1 to 3 percent slopes	42.8	28.9%		Ile	Ile											
1857	Ulysses silt loam, 1 to 3 percent slopes	39.9	27.0%		Ile	Ile		5	50	160	1350	1800	36	110	35	50	17
1124	Bridgeport silt loam, channeled	8.7	5.9%		Vw		4										
1859	Ulysses silt loam, 3 to 6 percent slopes	1.3	0.9%		Ille	Ille											
Weighted Average							0.2	1.4	13.5	43.2	364.5	486	9.7	29.7	16.9	13.5	4.6

Aerial Map



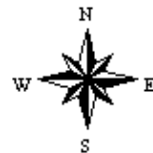
map center: 39° 17' 11.61, 101° 29' 38.03
scale: 10094

Maps provided by:



©AgriData, Inc. 2011
www.AgriDataInc.com

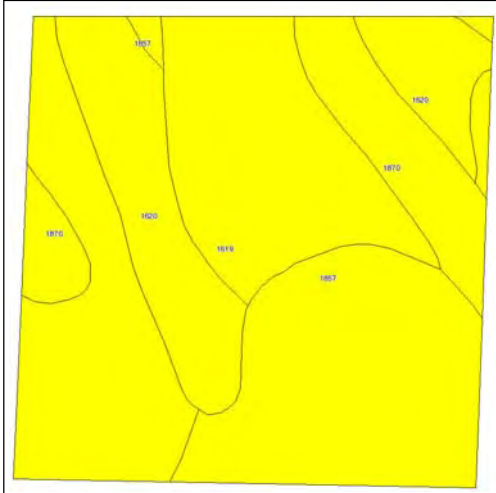
7-9S-37W
Sherman County
Kansas



12/19/2011

Field borders provided by Farm Service Agency as of 5/21/2008. Aerial photography provided by Aerial Photography Field Office.

Soils Map



State: **Kansas**
 County: **Sherman**
 Location: **036-009S-038W**
 Township: **Iowa**
 Acres: **151.6**
 Date: **12/19/2011**



Maps provided by:

 ©AgriData, Inc 2008
 www.AgriDataInc.com

Fsa borders provided by the Farm Service Agency as of May 23, 2008.
 Soils data provided by USDA and NRCS.

Code	Soil Description	Acres	Percent of field	Non-Irr Class Legend	Non-Irr Class	Irr Class	Soybeans Irrigated	Winter wheat	Winter wheat Irrigated	Sunflowers	Sunflowers Irrigated	Alfalfa hay Irrigated	Corn	Corn Irrigated	Grain sorghum	Grain sorghum Irrigated	Corn silage Irrigated	Alfalfa hay
1619	Keith silt loam, 0 to 1 percent slopes	62.2	41.0%		Ilc	I	45	40	70	1700	2150	6	55	175	40	115		2
1857	Ulysses silt loam, 1 to 3 percent slopes	41.6	27.4%		Ile	Ile		35	50	1350	1800	5	50	160	36	110	17	
1620	Keith silt loam, 1 to 3 percent slopes	29	19.2%		Ile	Ile												
1870	Ulysses-Keith silt loams, 0 to 1 percent slopes	18.8	12.4%		Ilc	I	42	37	61	1490	1920	6	52	170	38	112		
Weighted Average							23.7	30.6	50	1251.7	1612.8	4.6	42.7	136.7	31	91.2	4.7	0.8

Aerial Map



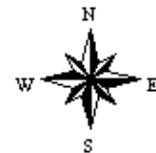
map center: 39° 13' 42.73, 101° 30' 45.14
scale: 10107

Maps provided by:



©AgriData, Inc. 2011
www.AgriDataInc.com

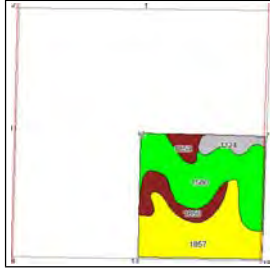
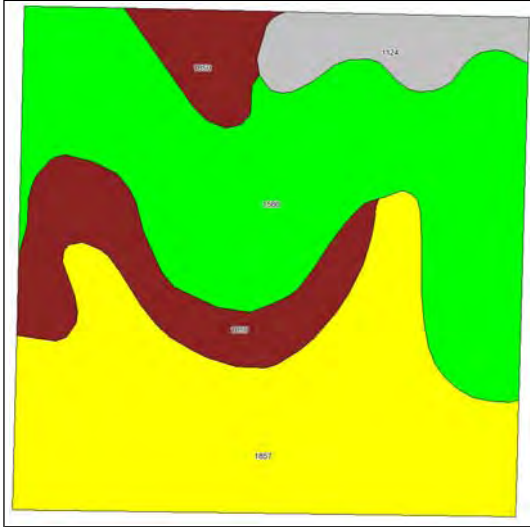
36-9S-38W
Sherman County
Kansas



12/19/2011

Field borders provided by Farm Service Agency as of 5/21/2008. Aerial photography provided by Aerial Photography Field Office.

Soils Map



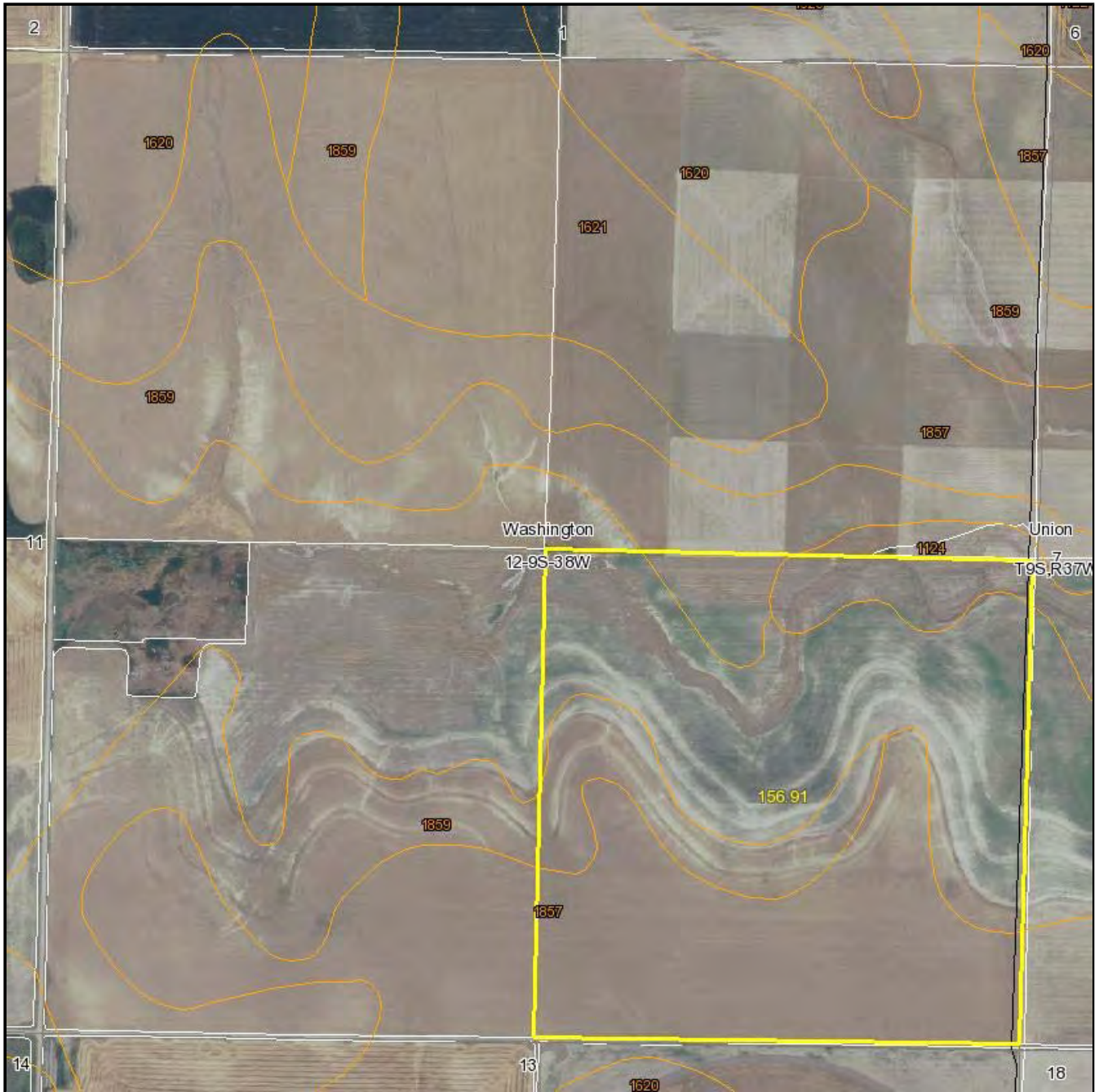
State: **Kansas**
 County: **Sherman**
 Location: **012-009S-038W**
 Township: **Washington**
 Acres: **156.9**
 Date: **12/19/2011**



Fsa borders provided by the Farm Service Agency as of May 23, 2008.
 Soils data provided by USDA and NRCS.

Code	Soil Description	Acres	Percent of field	Non-Irr Class Legend	Non-Irr Class	Irr Class	Smooth bromegrass	Alfalfa hay Irrigated	Corn	Corn Irrigated	Sunflowers	Sunflowers Irrigated	Grain sorghum	Grain sorghum Irrigated	Winter wheat	Winter wheat Irrigated	Corn silage Irrigated
1580	Colby silt loam, 5 to 15 percent slopes	63.3	40.3%		Vle										20		
1857	Ulysses silt loam, 1 to 3 percent slopes	59.4	37.8%		Ile	Ile		5	50	160	1350	1800	36	110	35	50	17
1859	Ulysses silt loam, 3 to 6 percent slopes	24.6	15.7%		Ille	Ille											
1124	Bridgeport silt loam, channeled	9.6	6.1%		Vw		4										
Weighted Average							0.2	1.9	18.9	60.5	510.3	680.4	13.6	41.6	21.3	18.9	6.4

Aerial Map



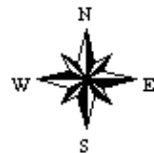
map center: 39° 17' 11.23, 101° 30' 43.68
scale: 10162

Maps provided by:



©AgriData, Inc. 2011
www.AgriDataInc.com

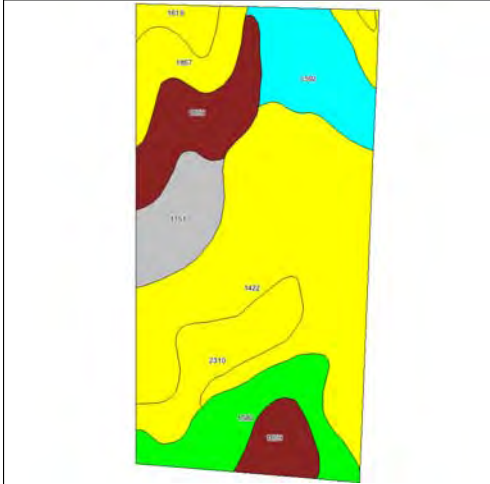
12-9S-38W
Sherman County
Kansas



12/19/2011

Field borders provided by Farm Service Agency as of 5/21/2008. Aerial photography provided by Aerial Photography Field Office.

Soils Map



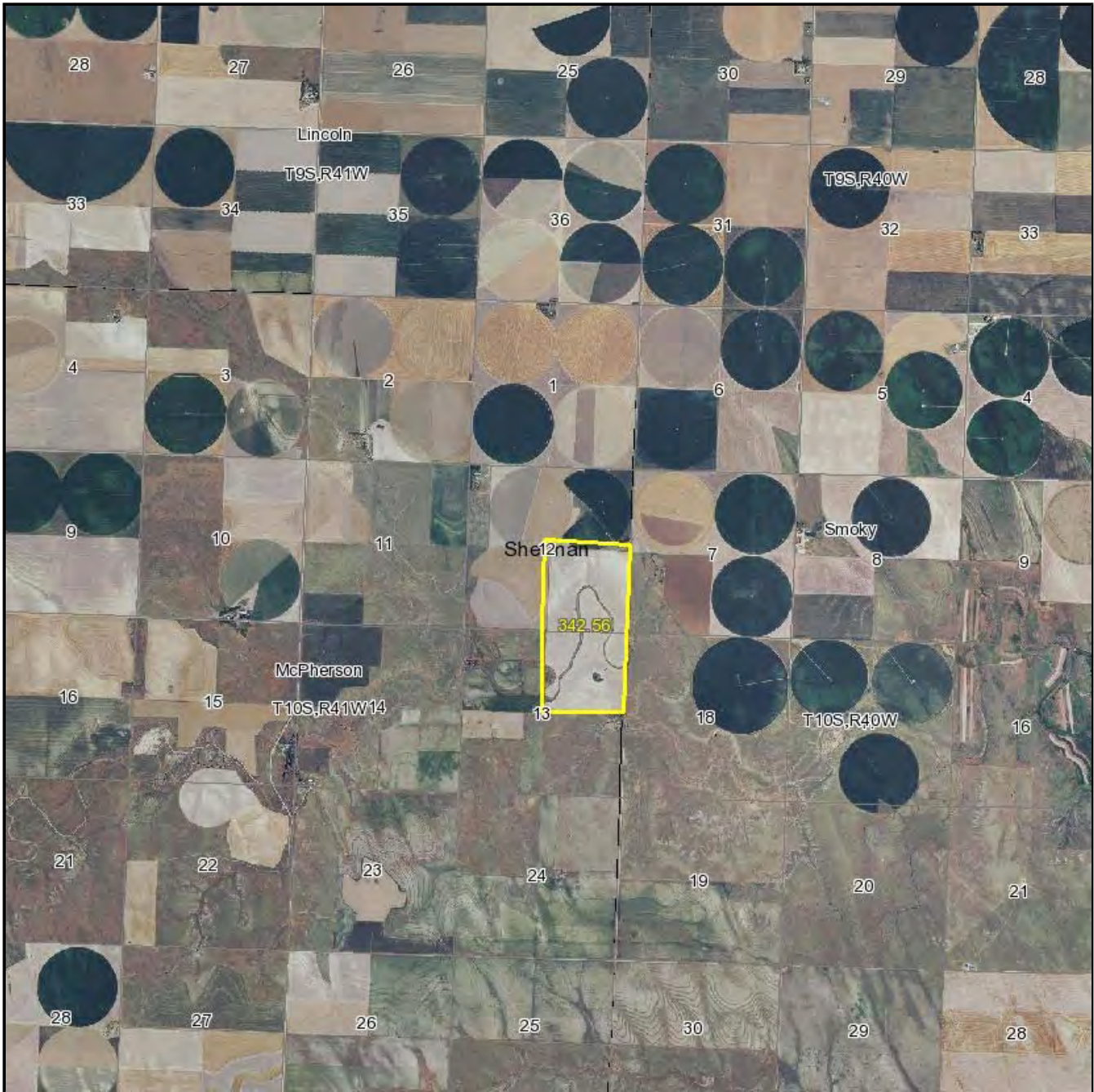
State: **Kansas**
 County: **Sherman**
 Location: **012-010S-041W**
 Township: **McPherson**
 Acres: **326.8**
 Date: **12/19/2011**



Fsa borders provided by the Farm Service Agency as of May 23, 2008.
 Soils data provided by USDA and NRCS.

Code	Soil Description	Acres	Percent of field	Non-Irr Class Legend	Non-Irr Class	Irr Class	Alfalfa hay	Alfalfa hay Irrigated	Winter wheat	Winter wheat Irrigated	Sunflowers	Sunflowers Irrigated	Corn Irrigated	Corn	Grain sorghum	Grain sorghum Irrigated	Soybeans Irrigated	Smoc brom Irrigat
1422	Goshen silt loam, rarely flooded	127.8	39.2%	Yellow	Ilc	I	2	5	38	60	1700	2100	175	55	40	110	45	
1859	Ulysses silt loam, 3 to 6 percent slopes	44.4	13.6%	Red	Ille	Ille												
1592	Colby-Ulysses complex, 3 to 5 percent slopes, eroded	34.1	10.4%	Cyan	IVe	Ille		4	21	40	840	1400	104	37	29	90		
1580	Colby silt loam, 5 to 15 percent slopes	34	10.4%	Green	Vle				20									
2310	Bridgeport silt loam, rarely flooded	28.8	8.8%	Yellow	Ilc	I	3	6	33	55			170		55	115		
1857	Ulysses silt loam, 1 to 3 percent slopes	24.6	7.5%	Yellow	Ille	Ille		5	35	50	1350	1800	160	50	36	110		
1351	Bridgeport-Arvada complex, rarely flooded	23.9	7.3%	Grey	Vc	I	2	6	26	55			130		40	115		
1619	Keith silt loam, 0 to 1 percent slopes	9.2	2.8%	Yellow	Ilc	I	2	6	40	70	1700	2150	175	55	40	115	45	
Weighted Average							1.2	3.9	27.7	42.2	902.6	1164	120.8	30.7	30.3	82.5	18.9	

Aerial Map



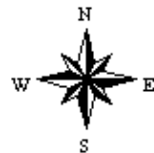
map center: 39° 11' 54.41, 101° 50' 52.25
scale: 60855

Maps provided by:



©AgriData, Inc. 2011
www.AgriDataInc.com

12-10S-41W
Sherman County
Kansas



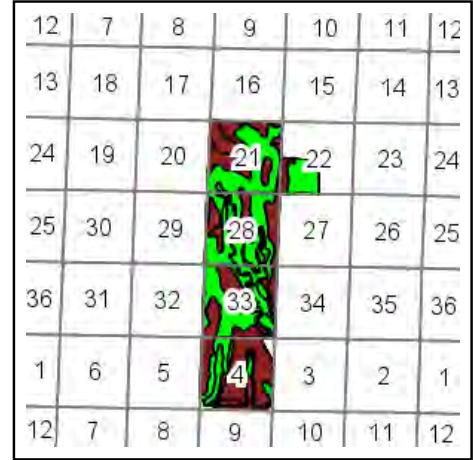
12/19/2011

Field borders provided by Farm Service Agency as of 5/21/2008. Aerial photography provided by Aerial Photography Field Office.

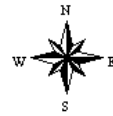
Soils Map



Field borders provided by Farm Service Agency as of 5/21/2008.
Soils data provided by USDA and NRCS.



State: **Kansas**
County: **Wallace**
Location: **28-11S-38W**
Township: **Wallace**
Acres: **2669**
Date: **1/1/2013**

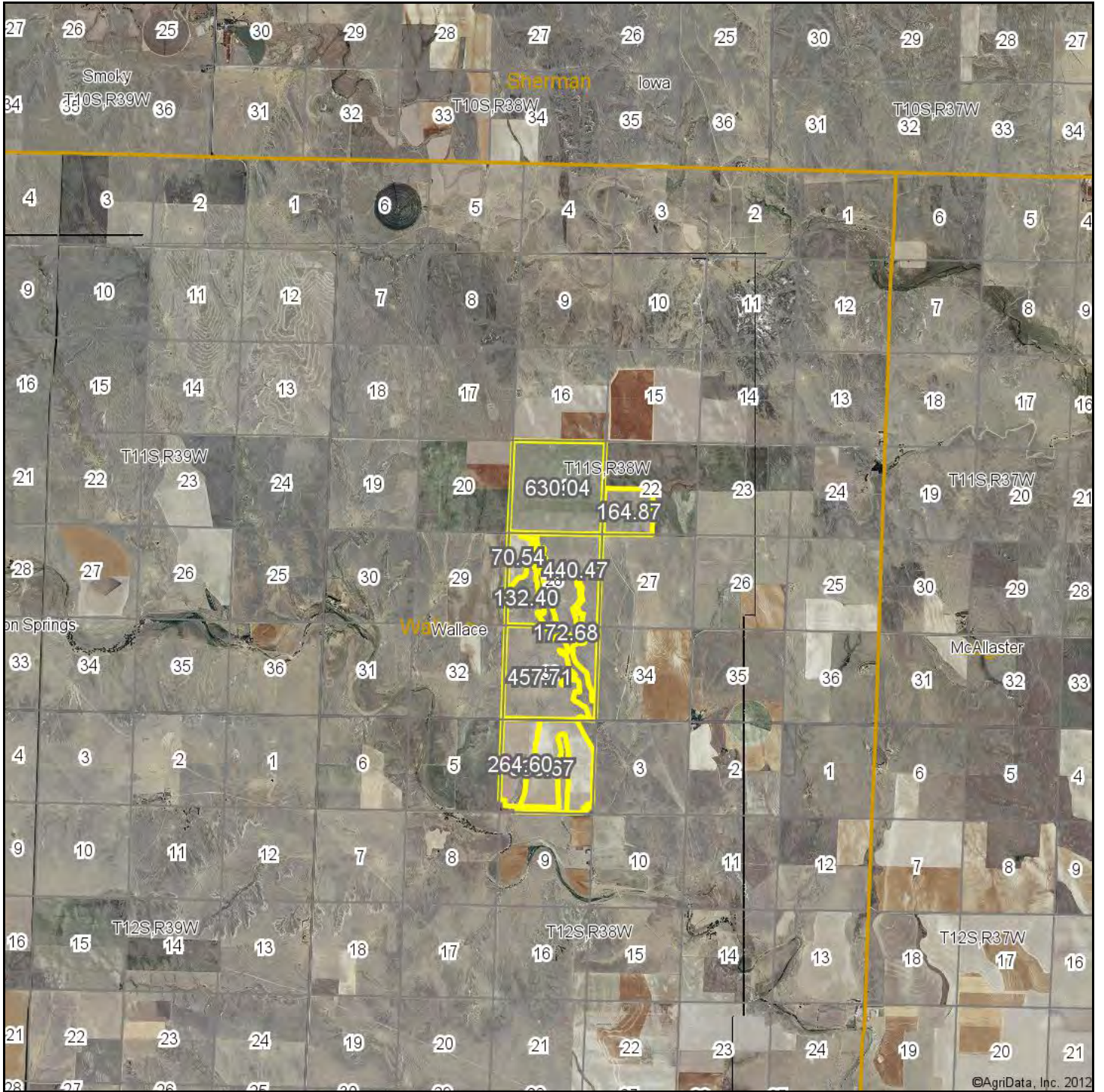


Maps provided by:



Code	Soil Description	Acres	Percent of field	Non-Irr Class Legend	Non-Irr Class	Irr Class	Sunflowers	Sunflowers Irrigated	Winter wheat	Grain sorghum	Grain sorghum Irrigated	Winter wheat Irrigated	Corn	Corn Irrigated	Alfalfa Irrigat
1579	Colby silt loam, 3 to 5 percent slopes	1178	44.1%		Vle	IVe			17	20	85	40			95
1857	Ulysses silt loam, 1 to 3 percent slopes	992	37.2%		IIIe	Ile			22	26	110	50			
1580	Colby silt loam, 5 to 15 percent slopes	194.6	7.3%		Vle				16						
1859	Ulysses silt loam, 3 to 6 percent slopes	90	3.4%		IIIe	IIIe			22	26					
1634	Kim-Otero complex, 6 to 25 percent slopes	87.3	3.3%		Vle	Vle									
1619	Keith silt loam, 0 to 1 percent slopes	85.8	3.2%		IIIc	I	1550	1900	35	35	110	60	55	170	
1692	Midway clay, 7 to 30 percent slopes	23.8	0.9%		Vle	Vle			10	10					
1422	Goshen silt loam, rarely flooded	12.7	0.5%		IIIc	Ile	1550	1900	35	35	100	60	45	170	
1856	Ulysses silt loam, 0 to 1 percent slopes	4.8	0.2%		IIIc	I	1200	1650	30	28	115	55	45	160	
Weighted Average								59.8	73.6	19	20.8	82.7	38.6	2.1	48.5

Aerial Map

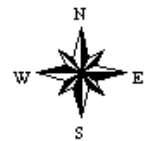


©AgriData, Inc. 2012

map center: 39° 4' 29.94, 101° 32' 43.61

scale: 107645

28-11S-38W
Wallace County
Kansas



1/1/2013

Maps provided by:



©AgriData, Inc. 2012

www.AgriDataInc.com

Field borders provided by Farm Service Agency as of 5/21/2008. Aerial photography provided by Aerial Photography Field Office.